

We work with only the best vendors for your industrial applications

Product Lines



Flowserve

Ingersoll-Dresser, Worthington, Worcester Controls, Edward Valves, McCanna/Marpac

- ANSI
- End-Suction
- Vertical Turbine
- Split case
- Mechanical Seals
- Valves

VIKING PUMP

Viking

WrightFlow Technologies

- Positive Displacement Pumps
- Rotary Gear
- Lobe Pumps
- Vane Pumps



Grundfos

Paco

- Vertical Multi-Stage Pumps
- Pressure Booster Systems
- End Suction Centrifugal



Sundyne

Sunflo, Ansimag, Kontro

- Teflon-lined and Metallic Mag Drive Pumps
- API and Sunflo High Pressure Centrifugal Process Pumps



Weir Minerals

Galigher-Ash, Warman, Hazleton

- Hard metal and Rubber-Lined Pumps
- Horizontal, Vertical and Submersible
- Slurry Valves

TOSHIBA

Toshiba

- AC & DC Motors
- Severe duty motors
- Low and Medium Voltage



Wilden

- Air-Operated Double Diaphragm Pumps

MD-Kinney

MD-Kinney

- Vacuum Pumps
- Blowers

SEEPEX.

Seepex

- Progressing Cavity



Gorman-Rupp

- Solids-Handling
- Self-Priming
- Submersible Centrifugal Pumps
- General Purpose Centrifugal Pumps

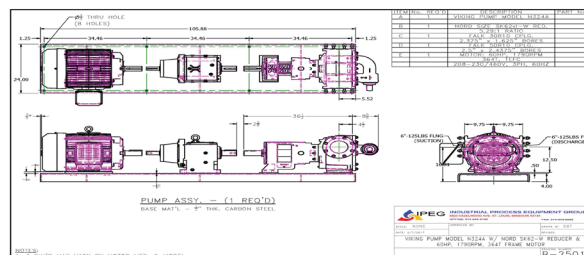
We work with only the best vendors for your industrial applications

We provide a wide variety of quality products from the most respected industrial vendors, helping you simplify your supply chain and reduce costs. Our expert staff will help you select the best industrial products for your specific needs, and we will help keep your equipment running efficiently throughout its lifetime.



Fabrication

Starting with your unique specification, we create CAD drawings in-house. We purchase the parts and assemble the skid-all under one roof. Simplify your purchasing process with one order for a full system that includes all the necessary components including pumps, valves, filters, motors and much more. We take great steps to ensure that each component works correctly and efficiently, resulting in professional high-quality custom fabrication that meets your exact needs.



Three Midwest Locations To Conveniently Serve You

Sales, inventory and repair facilities are close to you to serve you today.
For a free estimate, contact your nearest IPEG location.

St. Louis, MO
6823 Hazelwood Ave.
St. Louis, MO 63134
(314) 534-3100

Calvert City, KY
56 S. Main St. P.O. Box 995
Calvert City, KY 42029
(270) 395-5711

Decatur, IL
3921 East Mueller Ave.
Decatur, IL 62526
(217) 428-5001

AT YOUR SERVICE 24/7

Call our emergency service number at (314) 534-3100 for pump and motor services.